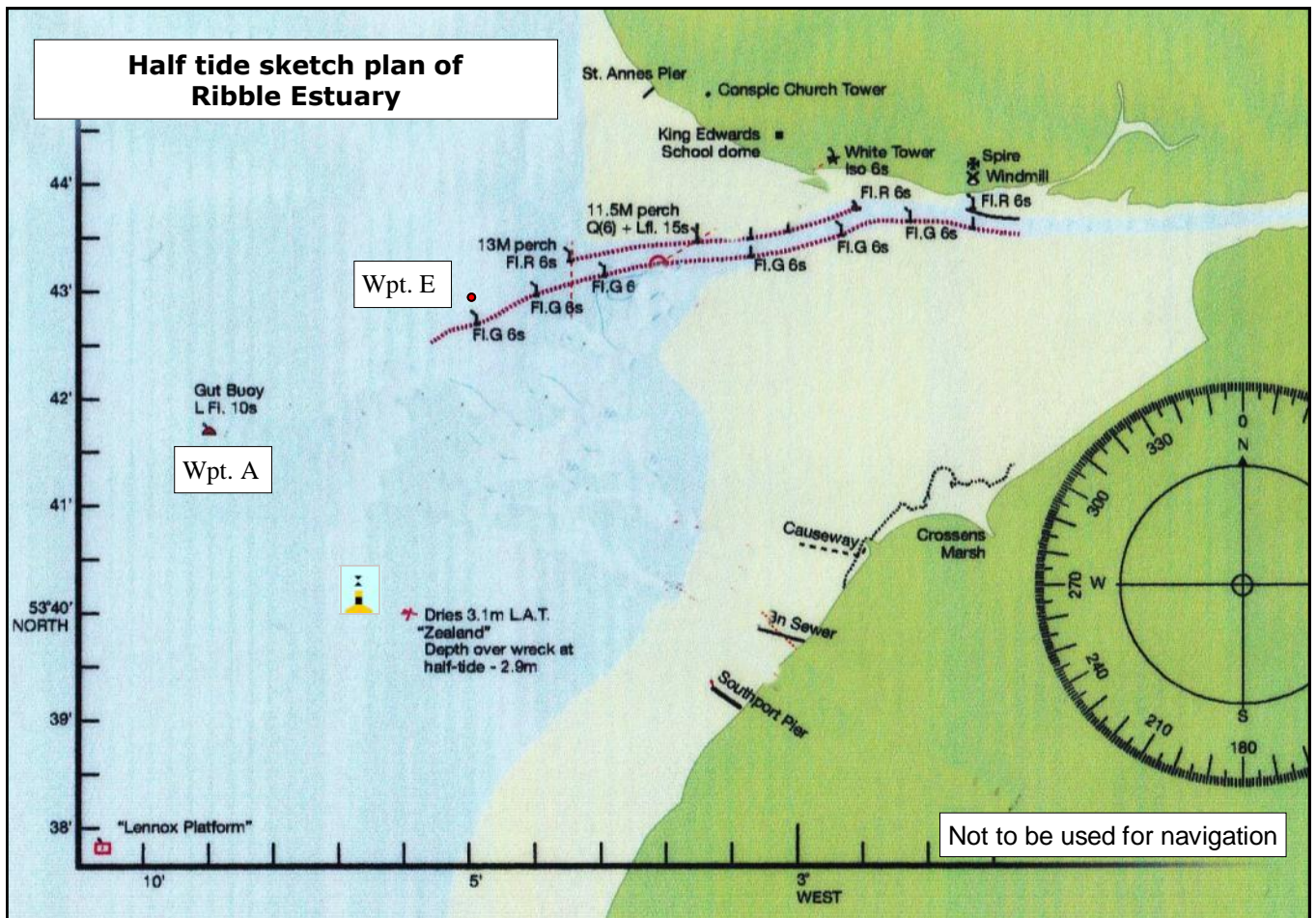


Pilotage Notes River Ribble Approach May 2010

Preston Marina
Navigation Way
Riversway Docklands
Preston
Lancashire
PR2 2YP
Telephone 01772 733595
E-mail; info@prestonmarina.co.uk
www.prestonmarina.co.uk

Leaving Gut Buoy (Waypoint A) at **2 hours before High Water Liverpool**, a vessel should head in an East North Easterly direction to Waypoint E, to leave the 3 starboard hand perches approx 3 or 4 boat-lengths to starboard and then continue upstream between the perches.

These notes supercede any previous pilotage advice referring to the "South Gut Channel", which is now no longer recommended as a navigable route. We must stress that there is no apparent man-made reason for the re-opening of the marked channel—no dredging has taken place, so no-one can say just how long this situation will continue—but this now becomes the recommended approach in and out of the Ribble until further notice and we are extremely pleased to report this very welcome natural development.



Waypoint	Description	Latitude	Longitude
Wpt. A	GUT GAS BUOY	53° 41.74'N	03° 08.90' W
Wpt. E	Channel Entrance	53° 42.90'N	03° 05.00' W



Gut Gas Buoy (Wpt. A)

NOTE - NO RESPONSIBILITY CAN BE ACCEPTED BY PRESTON MARINE SERVICES LTD. AS A RESULT OF USING THESE NOTES AND DIAGRAM. May 2010. REFER TO ADMIRALTY CHART 1981

Copyright © Preston Marine Services Ltd. 2010.